

Impact Report

2022

Registered Charity (UK): 1160039



Celebrating our Members across sectors

Message from our Chair



I want to express my thanks to all Trustees for their work this year and for all that they do to support the ALT membership and community.

Professor Helen O'Sullivan

This year's survey results highlighted some of the accelerated changes that we are seeing in the profession. Student engagement continues to be the primary driver for use of Learning Technology, and the sector has seen a significant growth in investment in permanent as well as fixed term posts in learning technology and a growing demand for learning technologists who are in positions of leadership. There is a growing community of digital practitioners and a growing range of learning technology roles and we are adapting our CPD and professional recognition to serve this growing community.

We continue to develop and promote the Ethical Framework and alongside other Trustees, I had the pleasure of sharing the framework with the sector at a number of conferences and events, including THE Digital Universities Week and Ahead by Bett.

I am also really proud of the work that ALT has done with the Ufi VocTech Trust in launching the AmplifyFE Community Space. This is a partnership project which works to connect and amplify communities of practice for digital learning, teaching and assessment. It works across the whole Further Education and Training sector in its widest terms engaging with vocational educators and those who support them.

Our mission

We are the leading professional body for Learning Technology in the UK.

We represent 3,500 individuals and organisations from all sectors including Further and Higher Education & industry and provide professional recognition and development.

Alongside the Annual Report and Annual Accounts, this report provides important information for all our stakeholders, especially our Members, and shows how we make an impact as an independent charity, how we serve Members across sectors and how we contribute to the public good.

Our aims are to:

- Increase access to Learning Technology expertise and professional development.
- Strengthen professional recognition for and representation of all Learning Technology roles across the communities we support.
- Provide pathways to accreditation for general practitioners, advanced professionals and leaders through our professional and ethical competencies framework.



**Dr Maren Deepwell,
Chief Executive**



Making Progress

Membership is at the heart of what we do and our weekly news digest continues to be one of the most valued membership benefits. What we do to serve our community is shaped by our Members and we support 350 active volunteers across our committees, publications and events. We offer a range of Open Badges to recognise professional development and active engagement in peer review, peer assessment and governance, totalling 10,000 Open Badges issued to date.

What we do

Why we do it

Progress

Membership

Our membership offer is evolving to meet our Members needs and reflect the challenging context for individuals and institutions.

- Organisational membership has grown by 2%
- Individual membership has grown by 9%.

Research in Learning Technology

Our peer reviewed Open Access journal provides an important platform to disseminate research and share expertise with an international audience.

- We have issued 10K Open Badges, incl. 450 CPD Open Badges
- We support 350 active volunteers across our committees and events

CMALT Accreditation

Demand for professional accreditation continues to increase and we have introduced new workshops to support candidates and cohorts.

- We have 14 institutional cohorts
- We have 120 candidates registered for CMALT

Valued by Members

Our values are inspired by our commitment to best represent and support our Members: we value openness, being an independent charity, we value collaboration and participation.

We ask Members why ALT is important to them...

ALT is a great place to gain professional recognition for the work we do, learn about about the sector and meet others working in the sector.

Been a member for a long time. This community is THE community for LT's and related professions. Its safe, inclusive and I am proud to be a part of it, and actually part of it, which isn't always the case in other communities.

I love being part of this supportive, knowledgeable, non-judgemental community.

ALT enables me to be part of a TEL community that generously shares knowledge & experience

ALT demonstrates the value and professional recognition of learning technology

Board of Trustees

We have completed a year long review of our governance to ensure that our practice reflects the updated Charity Governance Code. Having reviewed all areas of recommended practice, the Board found that overall our current practice conforms to the updated code and that in nearly all areas our existing procedures and processes reflect the recommended best practice.

1 Board effectiveness

We implemented new processes to measure Board effectiveness, including an annual self-assessment for Trustees. We reported to Members that overall Board effectiveness is 4.5 out of 5 across 16 categories.

2 Equality, Diversity and Inclusion

We set out a dedicated Equality, Diversity and Inclusion Plan and Policy which will support monitoring and annual reporting to all stakeholders, ensuring our Board and Assembly represent our membership.

3 Enhancing our governance

We audited all of ALT's governance policies in order to further enhance our governance processes.

Access expertise

We increased access to expertise and CPD to support our community through our events and activities. We welcomed more than 5,500 participants from the UK and 46 other countries to our events over the past year.



130 Webinars and workshops

We delivered a diverse programme of CPD webinars, members meetings, workshops, training sessions and conferences, celebrating the return of in person events in spring 2022.



550 Open Educational Resources

Were created including videos of event talks, resources for the Framework for Ethical Learning Technology, materials shared by Members and Special Interest Groups and content published by ALT.

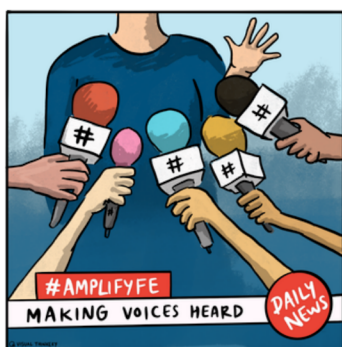


1200 Knowledge sharing posts

The Members only mailing lists is one of our most popular member services, attracting a wide range of discussion and knowledge sharing across sectors.

Recognition

We work hard to strengthen professional recognition and representation of all Learning Technology roles across the communities we support across sectors. In order to increase our reach and impact we work in strategic partnerships:



AmplifyFE

AmplifyFE launched in October 2020 and already connects 1800 professionals in Further Education and Vocational Education, providing a strong networking community for them to share, collaborate and learn.

In partnership with Ufi - the VocTech Trust, we produce an annual Communities of Practice Sector Audit Report, conduct research and support a growing community space.



ITN productions.

The Future of Learning

We work in partnership with ITN Productions to create news-style programmes, first The Future of Learning and now "Digital Transformation," exploring the potential of digital technology in education and industry and its impact on approaches to learning.



Award for Digital Transformation

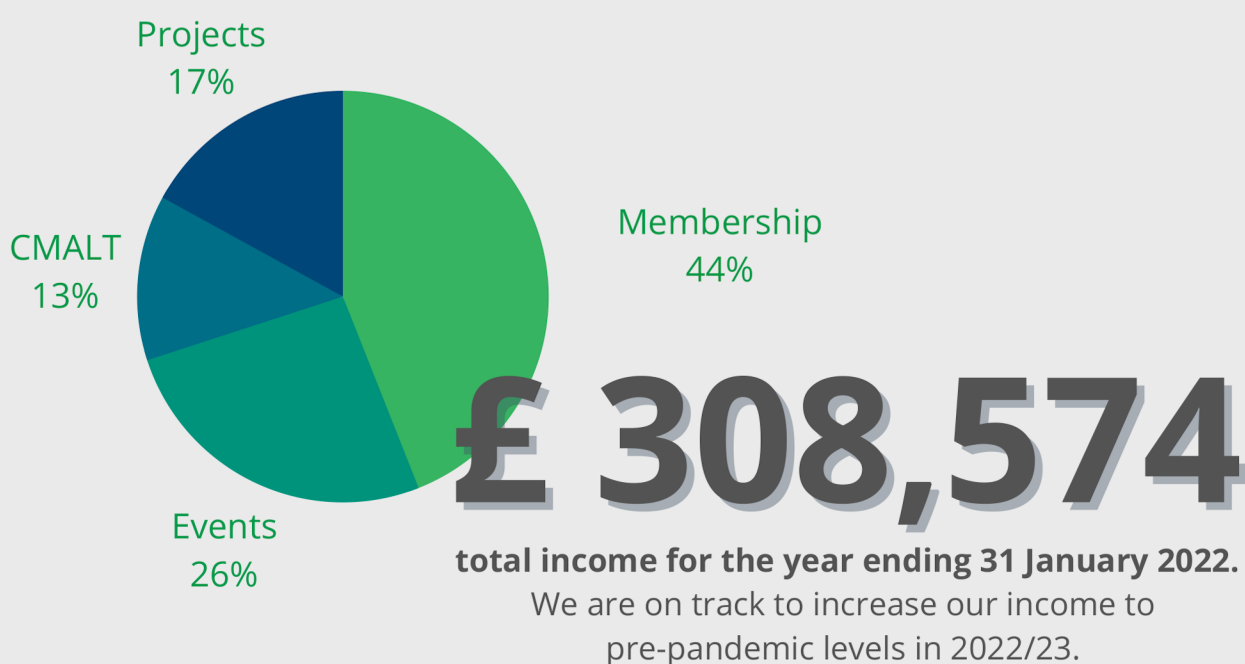
Open to individuals and teams from all education and training sectors, this Award in partnership with **Jisc** recognises achievement in digital transformation.

'Transformation' being a progressive systemic change in practices, processes, services and partnerships which improves the working lives of staff, has a positive impact on the student experience

During the financial year ended 31 January 2022, we took several successful measures to improve financial stability whilst operating in a challenging environment.

Events income remained below pre-pandemic levels but started to recover and we implemented a reduction in staff costs by 19 %. These initiatives have contributed significantly to the overall final net surplus of £11k compared to a deficit of £91k in the year ended 31 January 2021.

Charity finance 2021/22



Achieving such a position in these circumstances is a testament to the strength of the governance of the Association, the active engagement of its Members and the staff team in being proactive in adapting to their new operating environment.



Download our Annual Accounts and Report for further information.

Members Assembly

The Members Assembly, the overarching committee advising the Board of Trustees, meets monthly and includes representatives of Members Groups across the UK and Special Interest Groups focused around particular topics. The Assembly also includes the editors of the altc blog, journal and other committees. Since 2020 the level of activity across our groups and online channels has increased significantly and the Assembly has developed new guidance including as a Handbook for Members Groups and SIGs.

What we do

Why we do it

Progress

Blog and social media

The altc blog publishes reviews, case studies, opinion pieces and conference posts that are disseminated via social media and email digests.

- Our blog published 75 posts in the past year
- Two new email digests were launched last year

Members Groups

Our Members Groups in Northern Ireland, Scotland, Wales and all areas of England bring together Members in person and online to network, share practice and research.

- We supported 37 events for our groups in the last year.
- Members Groups started to convene in person again.

Special Interest Groups

We have now reached the max. number of groups we can support, connecting 750 Members in the UK and internationally.

- SIGs established since 2020: Anti-Racism and Learning Technology, Active Learning and Immersive Technologies.

What's ahead

Learning to adapt and thrive has been a key theme this year and has shaped our strategic priorities for the coming months. As we review and develop what we already do well we are also looking to serve Members in new ways, offering innovative ways for institutions with growing teams of Learning Technology professionals as well as individual practioners, researchers and leaders.

Developing a CMALT course

We will form a consortium to develop our first CMALT course, which will provide support for individual candidates and cohorts.

Expanding FELT Resources

We will continue to develop resources and tools for the Framework for Ethical Learning Technology.

Launching a hybrid events programme

Our events programme is changing and expanding, shaped feedback from Members, Member Groups and Special Interest Groups.

Join today

Membership is open to all with a professional interest in using digital technologies for learning, teaching and assessment.

Join ALT as a Member and become part of our network of 3,500+ Members in the UK and globally. If you are not sure where to start, have a look at recent news, our Impact Report and find out more about what we do and how we can help you. Browse the #altc blog for case studies, reviews and more or explore 25+ years of research, evidence and policy.

If you are looking to scale up and develop your use of technology for learning, teaching or assessment, we can help with recruitment via ALT's weekly news digest and access to the Members Directory of consultants; we offer practical resources, our Members only discussion list, webinars and conferences to share knowledge and find the expertise you need.



Join today alt.ac.uk/membership

This document and images are licensed under a Creative Commons Attribution-ShareAlike 4.0 (CC BY-SA 4.0) licence. The Association for Learning Technology (ALT) is a Charitable Incorporated Organisation (CIO). Registered Charity (UK): 1160039