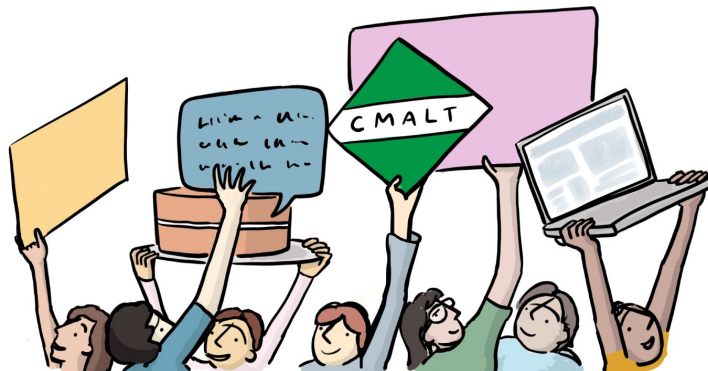


# Professional Development in Learning Technology

*Key findings from the 2022/23 Annual Survey*



This document and images are licensed for reuse under a [Creative Commons Attribution-ShareAlike 4.0 \(CC BY-SA 4.0\) licence](https://creativecommons.org/licenses/by-sa/4.0/).

ALT supports the Open COVID Pledge for Education. 6 March 2023

# Professional Development in Learning Technology

*Key Findings at a glance 2022/23*



**Professional  
recognition  
continues to  
increase**

**In person  
and online  
CPD remains  
important**

**Fewer  
professionals  
are seeking  
to change  
jobs**

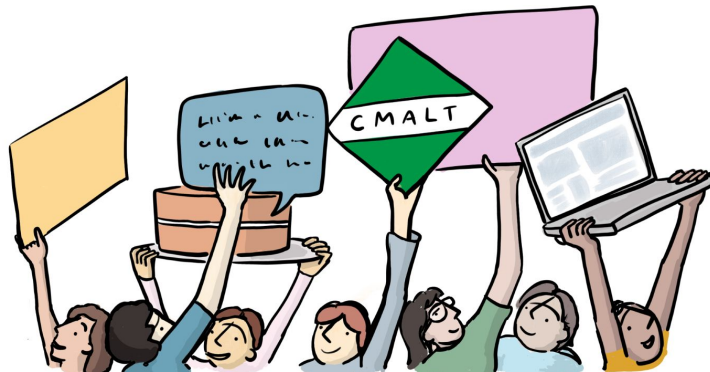
**Leadership  
remains a  
key priority  
across  
sectors**



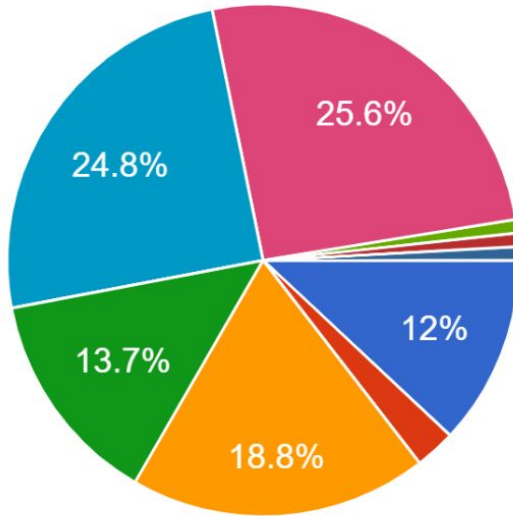
This document and images are licensed for reuse under a [Creative Commons Attribution-ShareAlike 4.0 \(CC BY-SA 4.0\) licence](https://creativecommons.org/licenses/by-sa/4.0/).

ALT supports the Open COVID Pledge for Education. 6 March 2023

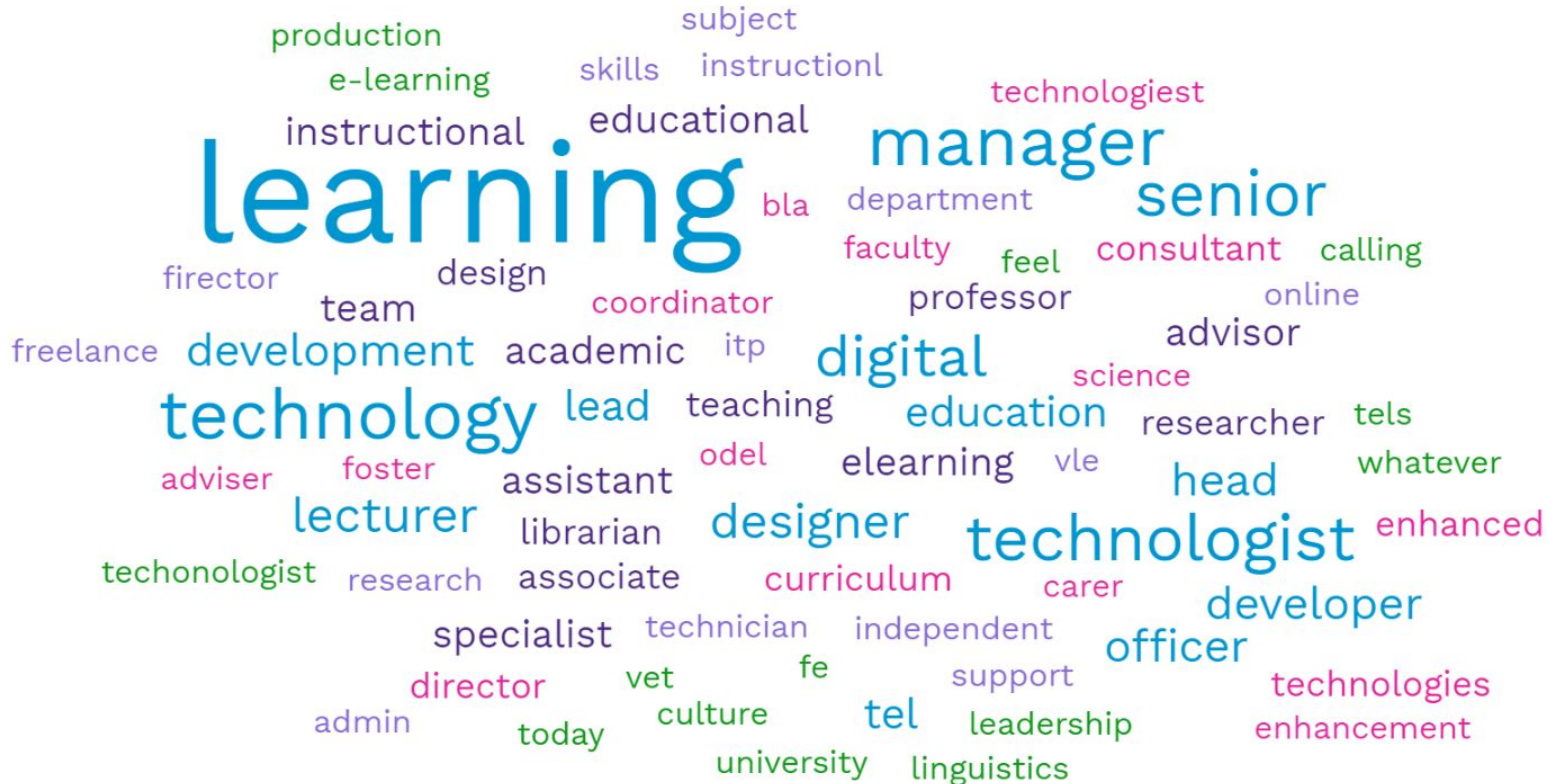
# Professional Development in Learning Technology



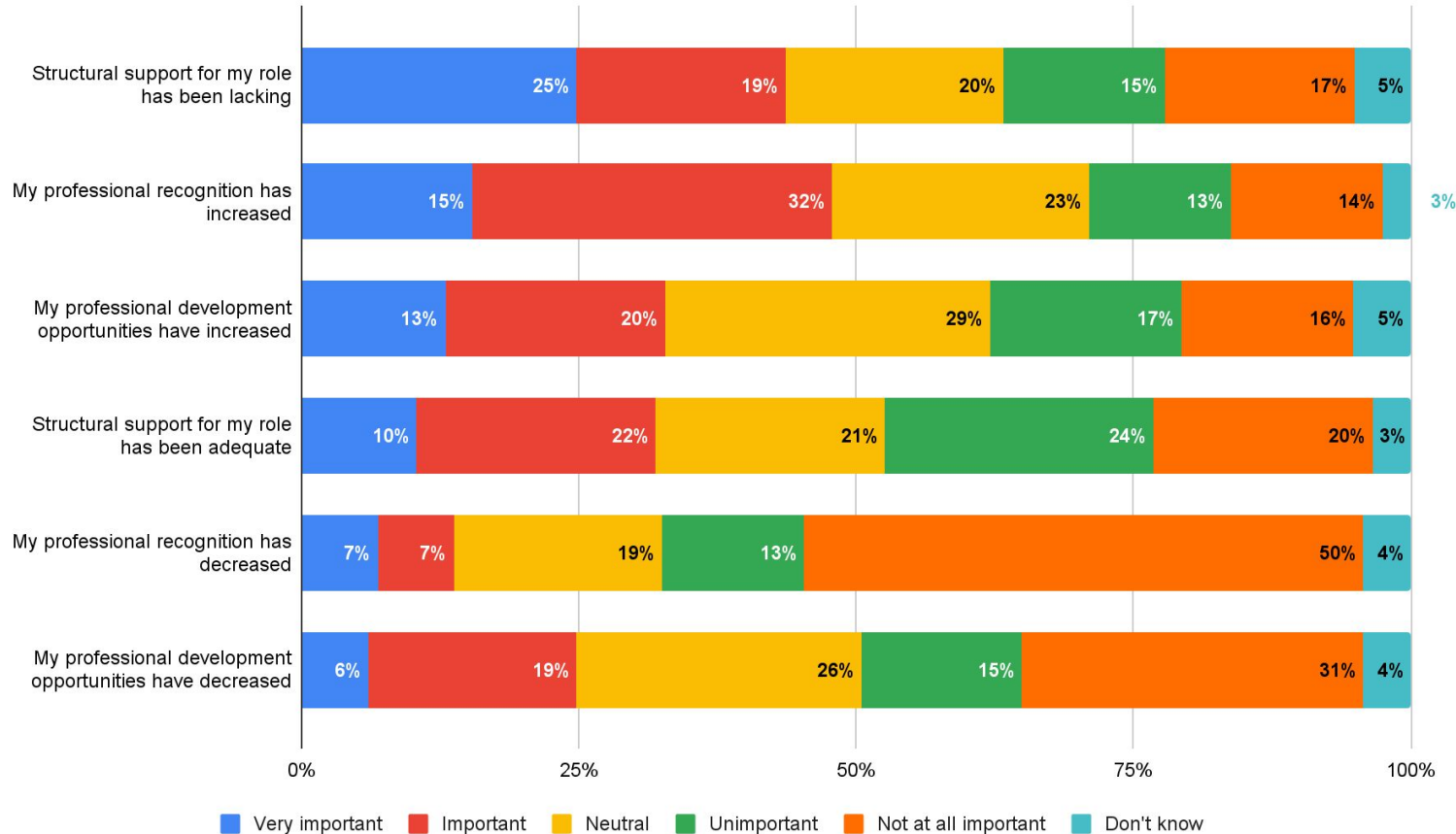
# What is the primary function of Your role?



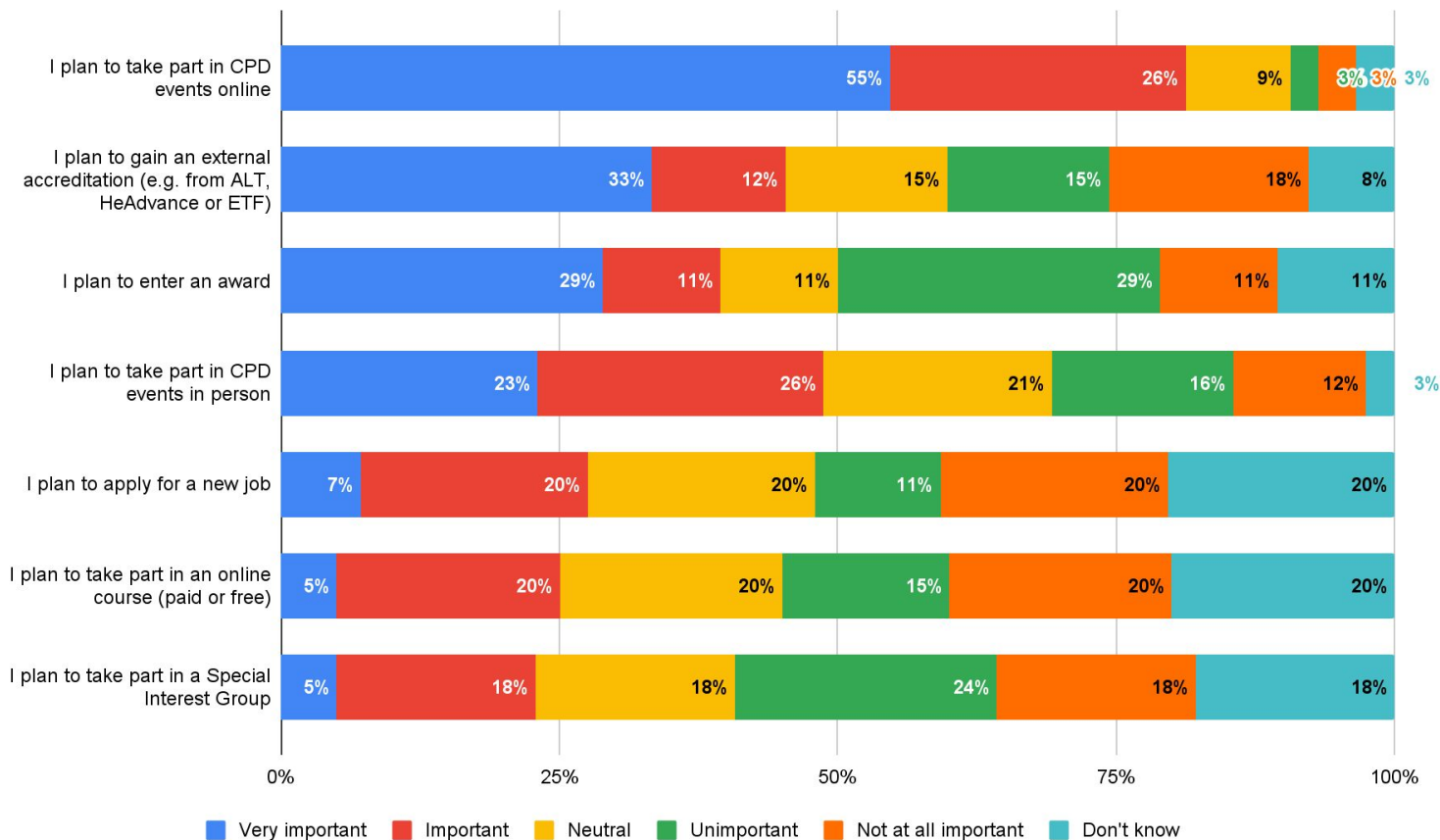
- Teaching
- Research
- Management/leadership
- Support
- Administration
- Staff development/training
- Technical support/development
- Teaching 40% / Research 40% / Servi...



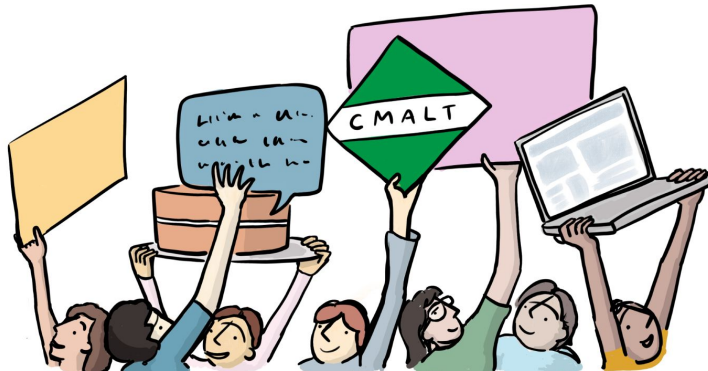
# Professional recognition in Learning Technology



# Professional Development in Learning Technology



# Professional Development insights from CMALT 2020-2023



# CMALT Accreditation Framework

Enhancing professional recognition for Learning Technology professionals

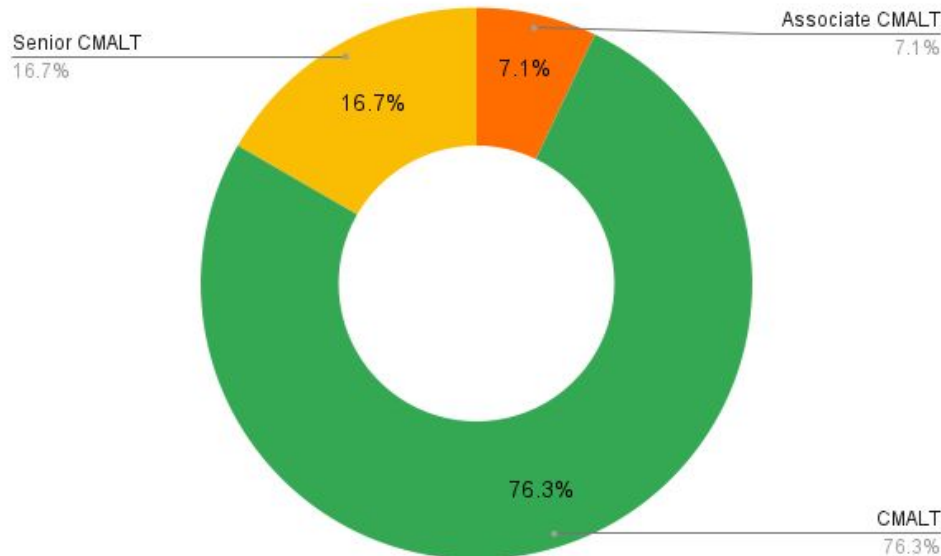


The CMALT Accreditation Framework provides pathways to peer-assessed accreditation for Learning Technology professionals in the UK and internationally.

From 1 Feb 2020 - 1 Feb 2023, 193 professionals registered for CMALT. The main CMALT remains the most popular accreditation pathway (65 %), with Senior CMALT the second most popular pathway, attracting 20 % of candidates

## Overview of portfolios submitted for assessment 2020-2023

*Portfolios are usually submitted three times a year. Due to the pandemic two assessment windows in this period were missed and submissions deferred to the next window.*



# CMALT Accreditation Framework

## Associate CMALT



Members can progress from Associate to CMALT to Senior CMALT or submit a portfolio for any given pathway.

Associate CMALT is likely to be for you if you:

- Are an early-career professional or have just moved into a Learning Technology-related role.
- Have fewer than three years' experience in a Learning Technology-related role.
- Only engage with Learning Technology as a smaller part of your role, and therefore have a limited range of evidence to draw on.

## Associate CMALT at a glance

**57%**

1st submission pass rate

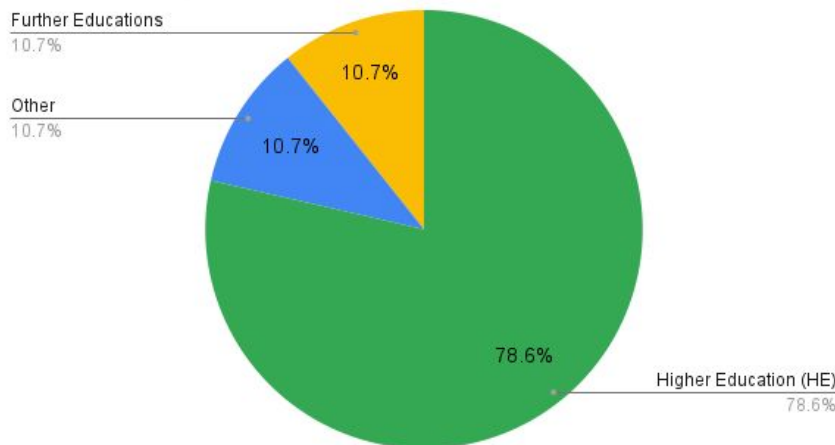
**36%**

Pass with minor revisions

**100%**

Resubmission pass rate

## Submissions by sector:



# CMALT Accreditation Framework

## CMALT



This main pathway has been established for over 10 years, and is mapped to a range of other accreditation frameworks in the UK and internationally.

Associate and Senior CMALT pathways were launched in 2019.

CMALT is likely to be for you if you:

- Are an established Learning Technology professional or educational practitioner.
- Have three or more years' experience in a Learning Technology-related role.
- Engage with Learning Technology throughout most aspects of your role.

## CMALT at a glance

**24%**

1st submission pass rate (no revisions)

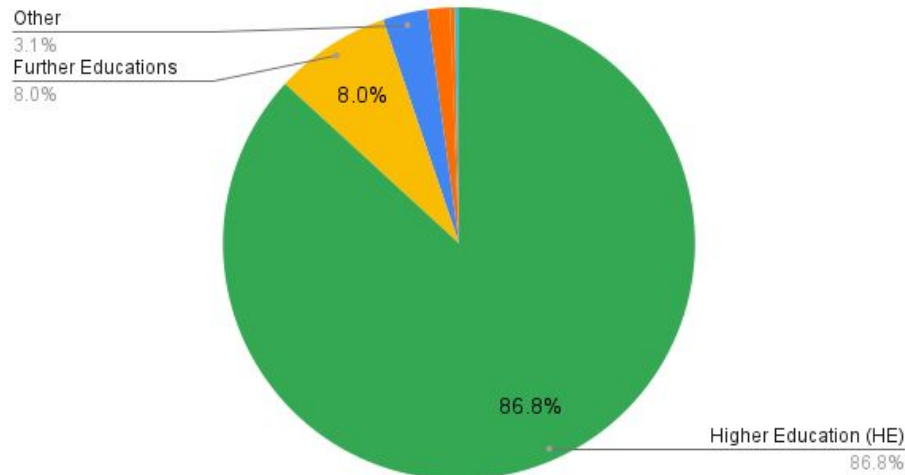
**66%**

Pass with minor revisions

**94%**

Resubmission pass rate

## Submissions by sector:



# CMALT Accreditation Framework

## Senior CMALT



Senior CMALT is likely to be for you if you:

- Are an experienced Learning Technology professional or educational practitioner with more than three years' experience in a Learning Technology-focused role.
- Engage closely with Learning Technology as a core part of your role.
- Have management, leadership or strategic responsibilities, or can demonstrate an equivalent level of impact on others through your work.
- Have a research focus in a relevant field.

### Senior CMALT at a glance

**27%**

1st submission pass rate

**44%**

Pass with minor revisions

**90%**

Resubmission pass rate

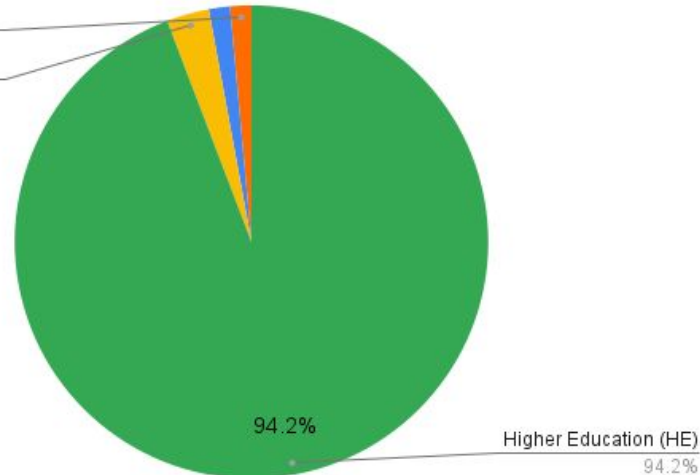
### Submissions by sector:

Commercial/Industry

1.4%

Further Educations

2.9%



# CMALT Accreditation Framework

CMALT



## Trends in Specialist Areas

CMALT portfolio offer unique insight into how our profession is changing. In 2019 ALT published the first trends in specialist areas, and we can now update this with data from 2020 to February 2023.

### Top 5 topics in 2022:

- Assessment
- Mentoring
- Learning design and course design
- Training & professional development
- Supporting and managing people and projects



# CMALT Accreditation Framework

## CMALT Specialist Areas by keyword



# CMALT Accreditation Framework

## Senior CMALT



### Trends in Senior CMALT Advanced Areas of Practice

The Advanced Area(s) should describe and reflect on an area of your professional practice that reflects advanced skills, expertise, insight, and impact, such as research, policy work, leadership or strategy.

#### Top 5 topics:

- Leadership
- Professional Development
- Research
- Policy & National Projects
- Technology specialism (e.g. Learning Analytics, Hybrid Learning)



# CMALT Accreditation Framework

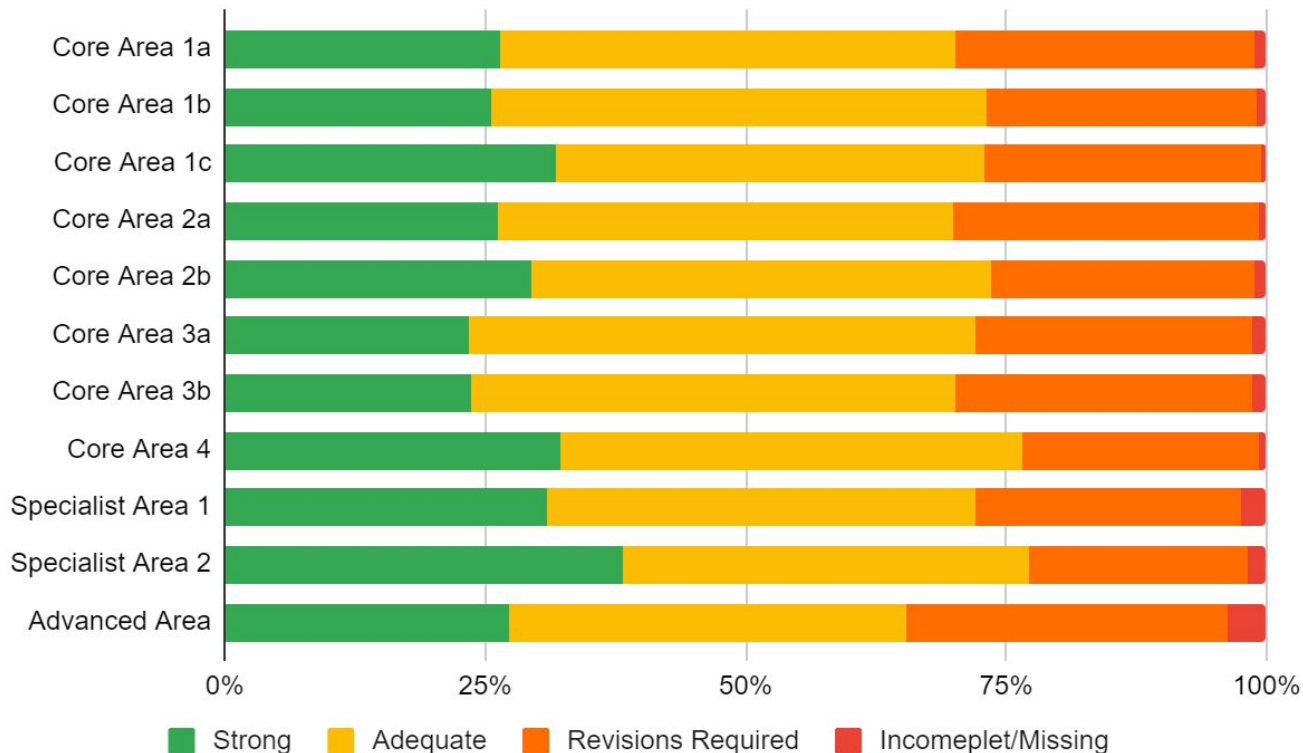
Enhancing professional recognition for Learning Technology professionals



As the framework develops we learn more about which aspects of professional practice is easier to evidence and reflect on, and which are harder.

This overview offers insight into the assessment outcomes of individual sections of portfolios, taking into account that not every section is required for each CMALT pathway.

This data will help us develop resources and support for CMALT candidates and cohorts.





# Trends in Learning Technology

*Resources*

**Key  
Findings**  
Download

**Annual  
Survey  
2022/3**  
Full Report

**Annual  
Survey  
2015-2023**  
Full open  
data set



[alt.ac.uk/annual-survey](https://alt.ac.uk/annual-survey)



# About our Annual Survey

This survey was established in 2014 in order to:

- Help map professional practice and development in Learning Technology;
- Chart how Learning Technology is used across sectors;
- Understand current practice to better meet the needs of and represent our Members.

The survey is open to all ALT Members, both individuals and organisations. We also welcome responses from all with an interest in Learning Technology.

The full anonymised data set of all survey data is available openly <https://alt.ac.uk/annual-survey>.

## Who responded this year?

For the 2022/3 survey we moved to collecting responses in January for the first time and this resulted in a lower response rate, only 117 responses in total and 90% of respondents are Members of ALT.

We received responses from all parts of the UK, and all sectors we represent, and the majority of responses were from Members working in UK Higher Education.

As part of our EDI plan, a new EDI monitoring form was implemented for the Annual Survey this year, which 75% of respondents completed.



This document and images are licensed for reuse under a [Creative Commons Attribution-ShareAlike 4.0 \(CC BY-SA 4.0\) licence](https://creativecommons.org/licenses/by-sa/4.0/).

ALT supports the Open COVID Pledge for Education. 6 March 2023